



From The CEO



Your support helped us bring thousands of people together for sing-alongs at movies in parks they're visiting for the first time, transform abandoned alleys into welcoming pedestrian thoroughfares, and build over 20 miles of park trails.

Dear Parks Alliance community,

Two years ago, San Francisco became the first city in the country where every resident lives within a 10-minute walk of a park: an amazing feat that you helped us achieve. Now, this is the gold standard for cities across the country - and yet, we know that not every public space in our City currently shines to its full potential.

I'll admit, reading some of the headlines this year about the state of our City has been challenging, but the work you're supporting is truly inspiring and showing real, amazing results.

We've been working to make sure every neighborhood has not only a park - but a park that is welcoming, safe and imaginative.

All of this doesn't happen by stepping over the problems our City faces - it happens when neighbors come together to improve their shared spaces and shape their neighborhoods. It happens when people like you step up to make our City a better place to live.

Improving our park system isn't just about making San Francisco more beautiful, it's critical to the well-being of every neighborhood. In the past year, groundbreaking research has shown: just 20 minutes a week in a park can do wonders for our mental and physical health, parks help our cities deal with unprecedented environmental challenges, and as we know, they strengthen and unite our communities.

Next year, we celebrate the 150th anniversary of one of the greatest urban parks in the world, Golden Gate Park. In doing so, we also celebrate how fortunate we are to be the beneficiaries of the visionary leadership and investments made by previous generations of San Franciscans who built an incomparable park system. It's our responsibility to continue to prioritize

and support our shared spaces, and to keep them dynamic and flexible to the ever-changing needs of our communities. Here's to the next 150 years of keeping our parks beautiful, welcoming, and accessible to all.

With gratitude,

A handwritten signature in white ink, appearing to read 'Drew'.

Drew Becher, CEO



STAFF LIST

Megan April
Manager,
Membership &
Special Events

Peter Arko
Associate Director,
Events

Julia Ayeni
Senior Project
Manager,
Parks & Place

**Sonia Gonzalez
Banks**
Director, External
Affairs, Development
& Marketing

Drew Becher
Chief Executive
Officer

Bonnie Bergeron
North Area Manager,
Parks & Place

Mark Bonsignore
Senior Project
Manager,
Parks & Place

Danyce Camp
Project Coordinator,
Parks & Place

Susanna Fraker
Project Manager,
Parks & Place

Steve Fredericks
Deputy Director,
Development

Oscar Garcia
Associate,
Development

Mark Hennon
Senior Project
Manager, Parks
& Place

Uriel Hernandez
Southeast Area
Manager,
Parks & Place

Claude Imbault
Deputy Director,
Parks & Place

Rachel Kovinsky
Associate,
External Affairs

Kearstin Krehbiel
Director, Research
& Development

Rebecca Liang
Staff Accountant

Paula Martin
Manager,
Development
Operations

Charlie McCone
Manager, Marketing
& Communications

Neal Nuttbrock
Program Liaison
& Office Culture
Coordinator

Madeline Porter
Grants Manager

Laurie Poston
Finance Consultant

Justin Probert
Director of Finance
& Administration

Brooke Ray Smith
Director,
Parks & Place

Luke Spray
Associate Director,
Strategic
Partnerships

BOARD LIST

Brian J. Baker

**Caroline
Brinckerhoff**

Rosemary Cameron

**Carolyn Feinstein
Edwards**

Martha Ehrenfeld

**S. Osborn (Oz)
Erickson**

Liz Farrell
Board Chair;
Development
Committee Chair

Sarah Gallo

Bob Gamble

**Mollie Gardner
Hector**

Chris Guillard

Anne Herrera
Communications
& Marketing
Committee Chair

Rick Hutchinson
Treasurer; Finance
& Investment
Committee Chair

Jaime Jones
Audit Committee
Chair

L. Jasmine Kim

Courtney Klinge

Brook Mebrahtu

Louise Mozingo
Programs
Committee Chair

Kelly Nice
Governance
Committee Chair

Jonathan Rewers

Melanie Sengupta

Tim Seufert

Glenn Snyder
Strategic
Planning Chair

John H. Ware

Lee Anne Weldon

Michael Yarne
Secretary; Innovation
& Advocacy
Committee Chair

MISSION

The San Francisco Parks Alliance champions, transforms, and activates parks and public spaces throughout the City.



pg. 4 **Reimagining our
Public Spaces**

Hickory Alley
Tompkins Stairway Garden
Stevenson Alley

pg. 8 **Celebrating our
Shared Spaces**

Sundown Cinema
Due South

pg. 12 **Golden Gate Park
150th Anniversary**

A Year of Celebrations
Everybody's Park

pg. 6 **Building Trails
and Community
Connections**

17 Mile Crosstown Trail
Phil Arnold Trail
Laguna Honda Trail System

pg. 10 **Every Neighborhood
Deserves a Great Park**

Citywide Public Space Initiative
Let's PlaySF!
India Basin

pg. 13 **Partners
Donors**

pg. 14 **Financials**

Reimagining our Public Spaces

In the past year we worked with neighborhoods throughout the City to bring challenged public spaces to life with imaginative works of art. From tiled stairways and art installations to expansive murals, here are some of the dynamic projects we have completed this year.

Hickory Alley

Hickory Alley had long contended with litter, graffiti, dumping, and safety issues, but throughout the last year the Parks Alliance worked with neighbors to revitalize the space. Through the Living Alleys Program, the Parks Alliance partnered with ArtSpan and the SF Conservatory of Music to

have local artist Hueman create a mural while listening to a live performance from Conservatory students. The result, entitled "What does music look like?" serves as a beautiful backdrop to the pedestrian thoroughfare connecting **Hayes Valley** and Civic Center Plaza.





AFTER

Tompkins Stairway Garden

Once a trash-covered hillside, Tompkins Stairway Garden is now a safe and welcoming **Street Park**, featuring a drought-tolerant garden in year-round bloom and a colorful tiled stairway. Dedicated attention from surrounding **Bernal Heights** neighbors transformed the site into a community greenspace and pedestrian corridor serving the Alemany Farmers' Market, nearby schools, and shopping districts.



“

We worked for years developing our project, but when we partnered with the Parks Alliance, things really started to happen fast. They helped us navigate the bureaucratic hoops, and their partnership and guidance have meant everything to the success of this project.

VICKY RIDEOUT
TOMPKINS STAIRWAY GARDEN
COMMUNITY MEMBER

”



BEFORE

Stevenson Alley

In 2018, Stevenson Alley neighbors came together to explore ways to mitigate the issues their **Market and 6th Street** corridor had been dealing with for years. Earlier this year, the Parks Alliance partnered with Kultivate Labs and the SoMa Pilipinas community groups to build

a temporary 'Basketball Court-Yard.' This space brings together SOMA's diverse community members to converse, exercise, and learn about the area and the ways that they can work together to create a more active and beautiful Stevenson Street.



BEFORE

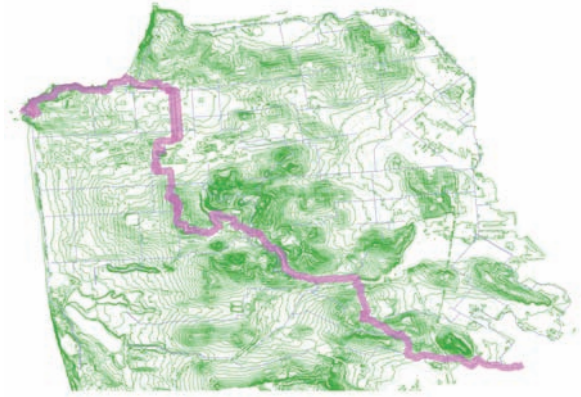


AFTER

Building Trails and Community Connections

Each year the Parks Alliance works with over 200 community groups to improve our collective backyard. This year, their trailblazing efforts led to the creation of an unprecedented network of trails!

17 Mile Crosstown Trail



From Candlestick Point to Lands End, the Crosstown Trail takes you through woods, streets, parks, and some hidden gems that our park partners built lovingly over the years. Notable highlights include a major trail section completed this year by SF Urban Riders:

the Laguna Honda Trail System. The vision for this trail was adopted in 2014 by the Recreation and Open Space Element (ROSE) to connect the City's southeast and northeast metro green spaces, and was completed this year on National Trails Day on June 1.

Laguna Honda Trail System

In 2016, Laguna Honda neighbors discovered a defunct trail system hidden among the trees. The discovery led to a partnership between the SF Urban Riders and the Laguna Honda Hospital to revive 2.5 miles of this lost trail. Today, these community trails are an active recreation site appreciated by local bikers, runners, and walkers alike!



223

active community
partners
beautifying
San Francisco

©2012 J. Fred Decker

Phil Arnold Trail in Golden Gate Park

Home to the oldest coastal live oak trees in San Francisco, the **Oak Woodlands** is a remnant forest located in Golden Gate Park's northeast corner. The Friends of Oak Woodlands have been stewarding this natural area for 25 years. The trail's construction began in 2018 and was completed this year, connecting trails from Twin Peaks, Mount Sutro, and Golden Gate Park. The scenic path was also dedicated to Phil Arnold, a longtime advocate of parks and trails - and forever a hero of the Parks Alliance.



IN MEMORY
OF PHIL ARNOLD
(1945-2019)

Phil Arnold was a lifelong advocate of trails and parks, and served on the Boards of SF Parks Alliance and Bay Area Ridge Trail Council. He left his imprint throughout the City and his legacy lives on in the beauty of the Oak Woodlands Trail.



17,000
 people engaged
 with parks through
 Sundown Cinema
 and Due South

Due South

This year, the Parks Alliance launched an initiative many years in the making: a free concert series at Jerry Garcia Amphitheater in **McLaren Park!** In partnership with Friends of the Jerry Garcia Amphitheater, SF Rec and Parks, Supervisor Ahsha Safai, and Bay Area event producer Noise Pop, Due South welcomed internationally acclaimed artist Mexican Institute of Sound and SF electronic artist, Giraffe. This event series hopes to introduce more people to this underutilized park and support local arts and culture for years to come.



“
 People need
 celebration in their life.
 It’s part of what
 it means to be human.
 We need magic
 and bliss and power,
 myth, and celebration
 in our lives. And
 music is a good way to
 encapsulate a lot of it.

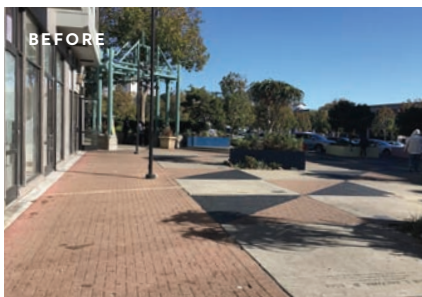
JERRY GARCIA

”

Every Neighborhood Deserves a Great Park

This year we launched an initiative to help communities improve their underutilized public spaces, and reached new milestones for the southeast waterfront and playgrounds across the City.

Gene Suttle Plaza



Gene Suttle Plaza
visitation is up
169%
during activation
hours

Citywide Public Space Initiative

This spring, the Parks Alliance partnered with the Office of Economic and Workforce Development to supplement City services with community-driven

Mendell Plaza



activation and beautification in SF's public spaces. We piloted this program at **Mendell Plaza** in the Bayview and **Gene Suttle Plaza** in the Fillmore. We worked

with surrounding neighbors, merchants, and community organizations to bring these neighborhood spaces to life with lighting, public art, and regular programming.

Let'sPlaySF!

This partnership with SF Rec and Parks raises funds to renovate 13 of the City's highest need playgrounds, benefiting 20,000 children across San Francisco. This year we finished the renovation of our first playground, **Washington Square Playground**, and broke ground on six others!



India Basin

The vision for 13 miles of interconnected green space along the southeast waterfront known as the Blue Greenway is becoming a reality. In the coming year, a major part of the Blue Greenway called **India Basin** will begin to undergo a stunning transformation, turning 9.6 acres of shorefront into a community destination. In collaboration with SF Rec and Parks and the Trust for Public Land, the Parks Alliance has ensured community input has been the driving force behind the park's design and is engaged in programming the space before construction begins. We're excited to create a park that celebrates the surrounding neighborhoods' vibrant history.



Golden Gate Park 150th Anniversary

Constructed by the determined engineer and gardener, John McLaren, who was told that no park could be built on sand, Golden Gate Park is one of the world's greatest urban parks. In 2020, we celebrate the iconic park's 150th birthday through city-wide programming and festivities.

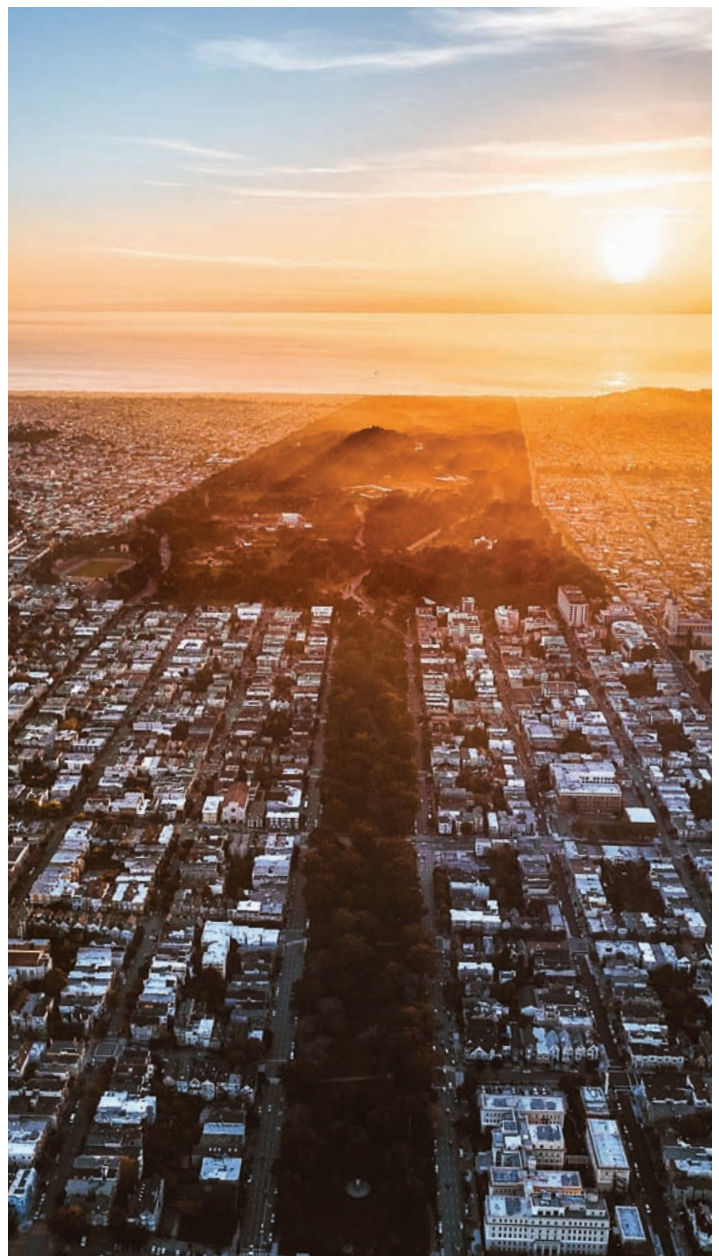


A Year of Celebrations

On April 4, 2020, we begin celebrating the history, arts and culture, innovation, and recreation that make up Golden Gate Park's 1,017 acres.

Everybody's Park

Golden Gate Park has more than 25 million annual visits, but remains inaccessible for many SF residents who live across town. The 150th Anniversary campaign will underwrite free shuttles to and from Golden Gate Park and outlying neighborhoods, introducing its wonders to children, families, and seniors who do not have accessible public transit options.



Community Partners

San Francisco Parks Alliance is grateful to our sponsored partners whom we work with every day to beautify and activate every corner of the City!

22nd Street Jungle Stairs
 Alemany Farm (Friends of)
 Alta Plaza Park (Friends of)
 Amphitheater at McLaren Park (Friends of AMP)
 Angel Alley
 Athens Avalon Greenspace
 Bernal Heights Outdoor Cinema
 Buena Vista Neighborhood Association
 Cabrillo Playground (Friends of)
 Carolina Greenspace
 Christopher Park Playground (Friends of)
 City Guides
 College Hill Neighborhood Association (Bernal Cut Path)
 Connecticut Friendship Garden
 Conservatory of Flowers
 Corbett Heights Neighbors
 Dahlia Society of California
 Diamond Heights Blvd Median Project
 Dolores Park Ambassadors
 Dolores Park Playground (Friends of)
 ECOS SF
 Esprit Park (Friends of)
 Far Out West Community Garden
 Fay Park Citizens Advisory Committee
 Franklin Square (Friends of)
 Garden for the Environment

Glen Park Greenway
 Goettingen Neighbors Group
 Golden Gate Park Band (Friends of)
 Golden Gate Park Dog Parks (Friends of)
 Golden Gate Park Handball Club
 Grattan Playground (Friends of)
 Green Alleys Project
 Greenhouse Project (The)
 GreenTrust SF
 Help McLaren Park
 Howard Langton Community Garden
 Japanese Tea Garden (Friends of)
 Joe Dimaggio Playground (Friends of)
 Jose Coronado Playground (Friends of)
 Kenny Alley (Friends of)
 Kezar Triangle (Friends of)
 Kids in Parks
 La Placita
 La Playa Park Coalition
 Lafayette Park (Friends of)
 Lake Merced Outdoor Center
 Lakeview Summit Steps
 Larsen Playground (Friends of)
 Lincoln Park Steps (Friends of)
 Linden Alley (Friends of)
 Literacy for Environmental Justice
 Marina Earthquake Monument Group
 McLaren Bike Park Founders
 Miraloma Southern Gateway Tile Project
 Mission Bay Families
 Mountain Lake Park Playground (Friends of)
 Ney Street Neighborhood Watch
 Noe Courts (Friends of)
 Noe Valley Rec Center (Friends of)
 Northridge CommUNITY Garden
 Oak Woodlands Golden Gate Park (Friends of)
 Pennsylvania Street Gardens
 Penny Lane (Friends of)
 Peru Avenue Stairs

Pioneer Park Project
 Playland at 43rd Avenue (Friends of)
 Polo Cycling Track (Friends of)
 Potrero Gateway Loop
 Potrero Hill Recreation Center (Friends of)
 Potrero Sustainable Living Group
 Precita Valley Neighbors
 Rebirth & Development
 Ridge Lane Neighbors
 Rossi Playground (Friends of)
 Sail SFBay
 SF Bee Cause
 SF Tennis Coalition
 SF Urban Riders
 Shared Schoolyards Project
 South End Rowing Club
 South Park Improvement Association
 Starr King of Rebirth and Development
 Storrie Ord Neighborhood Group
 Sunnyside Conservatory (Friends of)
 Sutro Stewards
 Tompkins Stairway Garden
 Tunnel Top Park
 Upper Douglass Dog Park (Friends of)
 Urban Alchemy
 Urban Sprouts
 Victoria Manalo Draves Park/Gene Friend Rec Center (Friends of)
 Visitacion Valley Agricultural Garden (Friends of)
 Visitacion Valley Greenway (GOAL)
 Visitacion Valley PTA
 Washington Square Park (Friends of)
 West Portal Playground (Friends of)
 Wilder Community Garden
 With Honey in the Heart

If you're interested in becoming a sponsored community partner or joining one near you, visit sfparksalliance.org.

City Partners

Thank you so much to our many partners in City agencies that help make all of our work possible.



Partner Conference

This year the Parks Alliance hosted our second annual partner conference with over 200 community groups from around the City. The conference—the only one of its kind in San Francisco—provides participants with case studies, skill-building, and resources on how to develop, deliver, and manage parks and public spaces. Keynote speakers included **Ron Finley**, the ‘Gangsta’ Gardener, and **Walter Hood**, the recipient of this year’s MacArthur Genius Award.

Parks Alliance Donors

Here's to you, who make all our work possible!

\$250,000 and above

Anonymous
Hellman Foundation
Koret Foundation
Lisa and John Pritzker Family Fund
San Franciscans for Sports and Recreation
Susan and David Tunnell

\$100,000 to \$249,999

William and Flora Hewlett Foundation

\$50,000 to \$99,999

Anonymous
The Baker Family Charitable Trust
Christine and Curtis Gardner
Kaiser Permanente
Mary Warner

\$25,000 to \$49,999

Anonymous
Commissioner Mark W. Buell and Susie Tompkins Buell
Chapman Hanson Foundation
Nancy and Ed Conner
Mimi and Peter Haas Fund
Toni Rembe and Arthur Rock

\$10,000 to \$24,999

Anonymous (3)
The Bothin Foundation
Tom and Linda Coates
Dale Stancliff Fund
Shannon and Thatcher Davis
Natasha and Dave Dolby
Martha Ehrenfeld and Carla McKay
Charlotte and Nick Giovanni
Sophie Middlebrook Hayward and Boe Hayward
Gabrielle Hull
Christopher and Kathleen Jackson
Diana Kapp and David Singer
Ranee Lan and Jeremy Liew
Ann and Jim Lazarus
Kelly Nice and Maureen Holt
Naomi Porat

Helen and Charles Schwab
Sports Basement
UBS Financial Services
Union Bank of California
Diane B. Wilsey

\$5,000 to \$9,999

Anonymous (2)
Ingrid Apter
AT&T
Leith and Stewart Barry
Shelley Bransten
British Motor Car Distributors
Lesley Bunim and Michael Jensen
Cynthia Butler and John King
CMG Landscape Architecture
Dodge & Cox
Oz Erickson and Rina Alcalay
Bert Galleno and Lareina Yee
Sarah and Joseph Gallo
Golden State Warriors
Connie Goodyear Baron and Barry Baron
Sara G. Griffith
Heather and Chris Guillard
Kathy Hanley Ahumada
Harriet Heyman and Michael Moritz
International Brotherhood of Electrical Workers, Local #6
Douglas Kudlick
Lesbians for Good of Horizons Foundation
Erin and JD Lumpkin
Elizabeth Meterparel
Microsoft Corporation
Sarah New
Bill Newmeyer
Anthony Paduano and Ruth Porat
Paul S. Nadler Family Charitable Trust
Margaret and Vic Quattrin
Christine and Brett Rogers
Frances A. Schwartz
Glenn Snyder and Catherine Allman
Cissie Swig
David Taylor
The Green Cross
The Humanist Fund

The Norman and Sadie Lee Foundation
Leslie and Raymond Tonsing
Ashley and Minott Wessinger
William Wong
Heidi Zak
Peggy and Lee Zeigler

\$2,500 to \$4,999

The Prado Group, Inc.
Alice Phelan Sullivan Corporation
Apple, Inc.
Drew Becher and Eric Lochner
Brookfield Properties
Sherry Butler
California Pacific Medical Center
Letty and Jim Callinan
Loretta Choy and Vince Carey
Ron and Gayle Conway
Dagmar Dolby
Susan and David Dossetter
John P. Dwyer
Carolyn Feinstein Edwards and Braden Edwards
Tamer N. Gargour
Steve and Ally Gwozdz
Catherine and Robert Hale
Commissioner Tom Harrison
Anne and Dennis Herrera
Asiff Hirji and Sarah Wigglesworth
Guy Hollins
Hospital Council of Northern and Central California
Kelly Hux
Jaime Jones Sasson and David Sasson
Meagan Levitan and Dale Carlson
Barry and Marie Lipman
Lisa Stone Prizker Family Foundation
March Conservation Fund
Alexandra and Kevin Marchetti
Nion McEvoy and Leslie Berriman
Bob and Joan McGrath
Lisette Mejia
Kristal Navarro
Perkins Coie Foundation
Reuben, Junius & Rose LLP
Louise Rothman Smetana
San Francisco Giants
Hsin Tien Shiao
Splunk Inc.
Swinerton Builders, Inc.
The Justin and Michelle Hughes Foundation
Alex Tourk
Verde Design, Inc.
Margaret and John Ware
Webcor Construction, LP

Lee Anne and Christopher Weldon
Samantha and Scott Zinober

\$1,000 to \$2,499

The Capital Group Companies Charitable Foundation
Adobe Systems Inc.
Katie Albright and Jacob Schatz
Lucy Almers and Sean Rhea
Anonymous (2)
Donna and Paul Armstrong
Mark Baginski
Melissa and Patrick Barber
Lily and Thomas Beischer
Susan Bethanis
Phil Black and Brigitte Sandquist
Ron and Emerald Blatman
Jenny and Travis Bogard
Daphne and Robert Bransten
Susan Britton
Mary Burns
Jennifer A. Buttimer and Nicholas M. Scharf
Alice Carey and Paul Fisher
John Cavanaugh and Julie Look
Eunice Chee
Amy and Peter Christodoulo
Tiffani Clarke
Kate and Timothy Clem
John and Katrina Clifford
Katherine and Jeffrey Congdon
Katy Congdon Williams and Michael Williams
Credo Restaurant
Martha and Jesse Cuevas
Jennifer and Marcel Wilson
Courtney and Owen DeHoff
Deanna Desedas
Mardi Dier
Amory and Scott Donohue
The Donohue Family Foundation
Allison and Jesse Eisenhardt
Elizabeth Everdell Garden Design
Joseph Ellin and Jacqueline Aiken
F Three Foundation
Liz and Mark Farrell
Kelly and Matthew Ferriss
Bailey and Taylor Flynn
Thomas and Mary Foote
Cheryl Frank and Michael Linn
Erik Gaensler and Shelley Marks
Jane and Mike Gaito
Gretchen and Robert Gardner
Phil and Emily Ginsburg
Lisa and Douglas Goldman
Google, Inc.
Vishal Grover
Douglas Hanks

Colin Harter
 Cheri and Anthony Head
 Helen Hilton Raiser
 Andrew and Mairead Homan
 Valerie and Tim Houts
 William Hudson and Nora Gibson
 Alanna and Kyle Hulburd
 Sanjay Jain
 Margaret and Edmond Kavounas
 Rachel Kish
 Stuart Kogod and Denise Garone
 Neil Koris
 Douglas Kornis and Jeanne Toulouse-Kornis
 Vivian Kremer
 Jacquelyn and Todd Krieger
 John and Katherine Kriken
 Peter and Veronica Krivkovich
 Randall Laroche and David Laudon
 Laura and Sloan Larsen
 Robert Lawrence
 David and Alexandra Lyon
 Evelyn and Will Marks
 Maverick Capital Foundation
 Anne G. McWilliams
 Theodore R. Meyer
 Lynne Hara Moon
 Louise Mozingo
 Nerd Wallet
 Amy Niles
 Sonja Moelleken and Kevin O'Brien
 Susan and Richard Olness
 Barbara and John Osterweis
 Julie and Will Parish
 Michelle and Eugene Payne
 Andre and Kristin Pech
 JaMel and Tom Perkins
 Dr. Kathleen Welsh and Dr. Bill Plautz
 Julie and James Redfern
 Melissa and Justin Reyna
 Julie and Christopher Ridley
 Helen and Allan Ridley
 JoAnna Robertson
 Shelagh and Tom Rohlen
 Emilie and Andrew Rosenfeld
 Royston, Hanamoto, Alley & Abey
 San Francisco Association of Realtors
 Colin and Jenny Schmidt
 Sheet Metal Workers' Intl. Association Local #104
 Steve Shih
 Mary Lou Shott
 Lynda Spence and Robert Mittelstadt
 Sprinkler Fitters Local No. 483
 Joachim Steinberg
 Marcia and Richard Swain
 T. B. Walker Foundation

Theatrical Stage Employees Union Local 16
 Anna Nordberg and Brantley Thompson
 Frederick and Beth Thurber
 Matthew Tiews
 Trust For Public Land
 Turner Construction Company
 Union Square Business Improvement District
 David Wessel
 Annette Wild
 Lara K. Witter and Curt Sigfstead
 Michael Yarne
 Phil Arnold and Monique Zmuda

Listed contributions made between July 1, 2018 and June 30, 2019.

Contributions under \$1,000 can be found at sfparksalliance.org. While we strive to be as accurate as possible, please contact paula@sfparksalliance.org with any corrections or omissions.



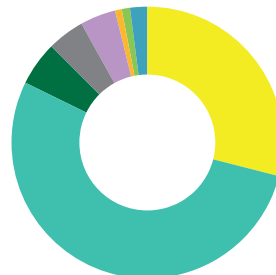
To learn more about including the Parks Alliance in your estate plans, please contact 415-621-3260 or development@sfparksalliance.org

These charity rating services have given the Parks Alliance their highest ratings:



Financials

Total Revenue



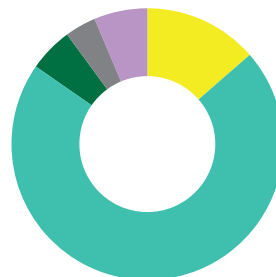
Contributions	7,375,525	29.0%
Capital Campaigns	13,528,474	53.2%
Admissions & Sales	1,326,034	5.2%
Program/Administrative Fees	1,161,496	4.6%
Revenue from Special Events	1,088,762	4.3%
Investment Income	175,254	0.7%
Realized and Unrealized Gain (Loss) from Investments	284,965	1.1%
Other Income	495,914	1.9%
Total	25,436,424	

*Admissions and Sales is from the Conservatory of Flowers

*Capital Campaigns include Let'sPlaySF! and Golden Gate Tennis Center

Contributions serve as the primary source of funding, comprising 82% of the overall revenue.

Total Expenses



Parks Alliance Projects	2,367,097	13.6%
Community Partner Programs	12,345,973	71.1%
Support for SF Recreation & Park Department	903,195	5.2%
Administration	655,637	3.8%
Fundraising	1,098,421	6.3%
Total	17,370,323	

Only 10% of expenses derive from administration and fundraising.

Contributed Income Breakdown



Individual	\$6,321,258.00	30.2%
Corporations	\$1,844,186.00	8.8%
Foundations	\$9,419,203.00	45.1%
Government Grants	\$3,319,343.00	15.9%
Total	\$20,903,990.00	

*Contributed Income includes Contributions and Capital Campaigns listed under Total Revenue

SF Parks Alliance relies on the generosity of our diverse funding sources to execute our mission.

*Unaudited financials. Audited financials will be available by early 2020 at sfparksalliance.org.

NONPROFIT ORG
U.S. POSTAGE
PAID
SAN FRANCISCO, CA
PERMIT NO. 12188

Become a Member!

If you use and love San Francisco's parks then be a part of the campaign to keep them safe, welcoming and activated!

Parks Alliance members experience benefits including complimentary beverages at our Sundown Cinema movie series, tickets to the Conservatory of Flowers, free entry to Scaregrove and Eggstravaganza, and more!



Party for the Parks

Over 600 guests celebrated our City at Party for the Parks in Civic Center Plaza this year. The SF Parks Alliance annual gala raised over \$700,000 for parks, playgrounds and public spaces across San Francisco.

